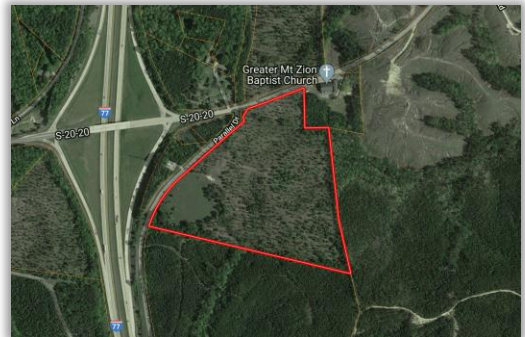


# 33.93± Acres

**I-77 at Camp Welfare Rd & Parallel Dr, Winnsboro, SC**  
**Fairfield County**

## \$1,866,000

- TM# 075-00-00-001-000
- Great Investment Property
- Ideal sites for Highway Business, Retail, Restaurants, and Hotels
- Exit 46 on I-77



**Broker: Rick Shepard**

**Mobile: (803)718-0410**

**Office: (803)337-7405**



[rick@brownandcomp.com](mailto:rick@brownandcomp.com) | [www.browncomp.com](http://www.browncomp.com)

*The Information contained herein has been given to us by the owner of the property and other sources we deem reliable. We have no reason to doubt its accuracy, but we do not guarantee it. All information should be verified prior to purchase.*